



# Special Ed Times at JSD

October 2025 Newsletter

## October Events

1-2: Elementary Parent Conferences

3: Elementary Teacher Compensatory Day  
No School for Elementary School

3: Secondary Teacher Professional Day-  
No School for Middle/ High School

6: High School Team Leaders Meeting

10: Middle School Team Leaders Meeting

10: HS/MS SCSC Singleton PLCs

10: District SEB PLCs

17: Last Day of Quarter 1

20: Grade Transmittal Day - No School

21-24: Fall Recess - No School

## Note from Brian King, Assistant Special Education Director

Happy October! This has always been one of my favorite months, and I am not alone. Here are a few thoughts from others who also appreciate this time of year:

"In October, a maple tree before your window lights up your room like a great lamp. Even on cloudy days, its presence helps to dispel the gloom."

- John Burroughs

"There is no season when such pleasant and sunny spots may be lighted on, and produce so pleasant an effect on the feelings, as now in October."

- Nathaniel Hawthorne

"October is the fallen leaf, but it is also a wider horizon more clearly seen. It is the distant hills once more in sight, and the enduring constellations above them once again."

- Hall Borland

What do these quotes have in common? They each focus on the positive things that October has to offer. In this spirit (pun intended), throughout this month of "Trick or Treat" I challenge you to move past any "tricks" that may arise and focus on all of the "treats" that surround you. These may be family, friends, amazing co-workers, students that you teach and support, or something that you have been able to achieve. As you focus on these positives, perhaps you too will say:

"I have been younger in October than in all of the months of spring."

- W.S. Merwin

Thank you for teaching and supporting the students in our district. What you do is so important and it does make a difference!

## IMPORTANT NOTICES

- There have been several requests to our UATT team for AAC app licenses. UATT can only issue apps for student use, but teachers can use their teacher funds to purchase app licenses. The app companies that we use most across the district are TouchChat and Proloquo2Go, and both of those apps are going to be on sale (50% off) in October for AAC awareness month. [Click here for additional information about this sale.](#)
- October 03, 2025, 1:00 PM – 3:00 PM.  
PD Opportunity for Back to Basics: The Essentials of EBD, OHI, and Anxiety in Special Education. This training will address: Does every student with an anxiety diagnosis qualify for IDEA educational classification? How can school teams communicate with parents about the difference between ADA (accommodations) and IDEA (SDI) when discussing eligibility based on an anxiety diagnosis?  
Secondary Teachers, please use this [registration link](#) to sign up.

## ROTATING STATION:

### Unlocking Student Success with Language

Language is the foundation of all communication. It affects how we express ourselves, experience the world around us, and analyze, process, decode, and understand information. This is precisely why a strong command of language is essential to a child's classroom and academic success. Language itself is not just another school subject; it's the cornerstone of how all subjects are learned. It impacts how children communicate ideas, retain and recall information, remain active and participatory at school, and interact with peers and teachers in an educational setting.

Children and teens with language difficulties not only are more likely to struggle academically and receive poor grades but are also more prone to experiencing poor confidence, low self-esteem, and lack of socialization.

Here are a few more resources that may also be helpful:

[What can educators do to help children who struggle with Oral Language Skills?](#)

[Classroom accommodations for language disorders](#)

[Teaching Communication Skills: A Toolkit for Educators](#)

## Teachers Toolbox

### RULEBOOK REMINDERS

Just a reminder of the district resources that are available and useful for all special education teachers.

[IEP Handbook](#)

[Special Education Rules](#)

[Special Ed Forms](#)

[Treasure Box](#)

[Utah Accessibility, Accommodations, and Participation](#)

### TEACHING TIDBITS

I am really excited about a book study I am doing with USBE. The book is titled - *Transform Your Math Class Using Asset-Based Teaching*. This book's focus is on fostering a love of mathematics by creating a more inclusive and empowering learning environment through asset-based teaching. An asset-based perspective on math education means starting with what students already know instead of focusing on what's missing. This approach elevates student thinking and reasoning skills. Educators acknowledge that all students bring prior experiences, strengths, talents, and resources to the learning process and can contribute meaningfully in an authentic learning environment.

I also found two great articles about math -

- [Building Students' Number Sense in Elementary Math](#)
- [The Myth of the Math Kid](#)

**1% Better**  
BEHAVIOR BYTE

Use Proximity.

Simply standing  
near a student  
often prevents off-  
task behavior.  
No words needed—  
just your presence  
can redirect.



- JBAT -

1% changes for 100% results

# ALL-STARS SPOTLIGHT

April Rudd  
Resource Teacher  
Majestic Elementary



April Rudd is an experienced general education teacher who made the thoughtful decision to move into special education. Now in her second year as a resource teacher at Majestic Elementary, she is already making a wonderful difference. She has a natural gift for building connections and showing genuine care for students with a wide range of needs, and she is truly doing an amazing job.

Heather Tester  
Self-Contained Class Teacher  
Mountain Ridge High School



Heather is a veteran special educator who shapes future special educators as she supervises student teachers. She is an example of patience, love, and kindness as she works with our severe student high school population. Even when the job is at times very hard, Heather always has a sunny smile. She advocates for and prepares her students to be successful now and contribute to society as adults. Thank you Heather, for all you do!

Lisa White  
Physical Therapist  
Early Intervention

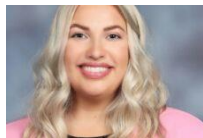
We are pleased to recognize Lisa White in our newsletter spotlight. With a 22-year career as a pediatric physical therapist and 7 years dedicated to the Jordan School District Early Intervention program, her impact is clear across our community. Her kindness and dedication are evident in her parent-friendly approach, positioning caregivers as essential partners in the therapeutic process. Well regarded for her effective problem-solving skills and consistent willingness to assist, Lisa transforms challenges into achievable milestones. Her warmth and collaborative nature have made her a valued ally for families and a respected member of our community.

Zoe Curry  
School Psychologist  
Falcon Ridge Elementary



Zoe Curry is the school psychologist at Falcon Ridge Elementary. Zoe is highly positive, outgoing, and always committed to providing the best services to her students, families, and school. She consistently goes above and beyond to ensure that her students and team receive the support they need. In addition to providing counseling, IEP, and 504 support at her school, Zoe teaches specialized "Timely Topics" at the Jordan Family Education Center to support parents and families throughout the year. We are lucky to have Zoe as part of our team!

Tiffany Smith  
Principal  
Elk Meadows Elementary



Elk Meadows is one of those schools you walk into and immediately feel welcomed by everyone's kindness and smiles—staff and students alike. Tiffany Smith has created a truly supportive environment and community. She leads by example, always present and ready to help with anything, never shying away from even the most challenging behaviors. Tiffany can often be found in classrooms, encouraging and supporting both teachers and students. Her commitment has helped build an amazing community where every student, parent, and teacher feels valued.

Amy Ludlow  
Speech Language Pathologist  
Terra Linda Elementary

Amy Ludlow is an experienced SLP with a love for research. Have a conversation with her and you will hear about the podcasts and articles she has recently accessed. More importantly she uses the research to constantly improve and innovate the therapy she is doing with kids. Her passion for EBP and her profession has also made her an incredible advocate for understanding the unique impact that SLPs can have with their expertise in language development through the ages. Amy will always advocate for the rights of the students to receive excellent, specialized instruction. Thank you Amy!