

JSD DIGITAL TEACHING & LEARNING AI FRAMEWORK

THE 4A'S OF AI



Jordan School District's vision is threefold - Be Curious, Be Intentional, and Be United. The District's vision is at the heart of our approach to using technology in learning. We want to be curious in exploring innovative approaches to using educational technology. We want to be intentional about the technologies we implement in Jordan classrooms. And we want to be united in focusing on the technology tools that best meet the needs of all Jordan learners.

Artificial Intelligence fits in perfectly as a technology tool that allows Jordan School District to meet our vision. Let's take a closer look at how AI aligns with Jordan's vision to Be Curious, Be Intentional, and Be United.

1. Be Curious: AI tools can facilitate curiosity by offering personalized learning experiences and adaptive content that cater to individual student needs and interests. For instance, AI-driven platforms can provide students with interactive simulations, virtual labs, and exploratory activities that encourage inquiry-based learning.
2. Be Intentional: AI can help educators make data-driven decisions by analyzing student performance and identifying areas where interventions are needed. AI tools can streamline administrative tasks, allowing educators more time to focus on intentional instruction and personalized support for students.
3. Be United: AI can enhance collaboration among educators by providing platforms for sharing resources, teaching strategies, and best practices. AI-driven analytics can also help identify common challenges and successes across the district, fostering a united approach to addressing the needs of all learners.

In this framework we will explore the 4A's of AI: Assessment, Awareness, Advocacy, and Accountability. We will discuss how each of the A's can be addressed by Students, Teachers, Administrators, and Parents.

THE 4 A'S



ASSESSMENT

EDUCATORS AND STUDENTS MUST BE INFORMED ABOUT AI'S CAPABILITIES, APPLICATIONS, AND LIMITATIONS, ENSURING AN UNDERSTANDING OF THE ETHICAL CONSIDERATIONS AND POTENTIAL BIASES INVOLVED IN ITS USE.



AWARENESS

EFFECTIVE COMMUNICATION ABOUT AI'S ROLE, BENEFITS, AND CHALLENGES IS CRUCIAL IN EDUCATIONAL ENVIRONMENTS TO ENSURE THAT MATERIALS HAVE BEEN CRITICALLY EVALUATED FOR ACCURACY, RELEVANCE, AND CLARITY.



ADVOCACY

AI SHOULD BE SEEN AS A COLLABORATIVE PARTNER IN THE LEARNING JOURNEY, ENHANCING PERSONALIZED EDUCATION AND SUPPORTING TEACHERS AS CO-EDUCATORS TO ENRICH THE LEARNING PROCESS.



ACCOUNTABILITY

ADMINISTRATION, TEACHERS, AND STUDENTS LEVERAGE AI'S UNIQUE CAPABILITIES TO FOSTER INNOVATION AND CREATIVITY WHILE ENSURING THAT THE "HUMAN ELEMENT" IS CRUCIAL IN CREATING RESPONSIBLE AND ETHICAL INTERACTIONS THAT CONSIDER THE IMPACTS ON LEARNERS.

AI for Jordan Students



Assessment

- **Improve Your Habits:** See how AI can help you study better and get more out of your education.
- **Make Smart Choices:** Weigh the pros and cons of AI to decide how best to use it for learning.



Awareness

- **Understand AI basics:** How does AI work and what are its limits?
- **AI vs ME:** Determine when AI use is appropriate versus traditional methods. Understand when NOT to use AI.
- **Have a Thought Partner:** Use AI for personalized learning and quick feedback.
- **Familiarize yourself:** Learn about district-approved AI tools and their uses.



Advocacy

- **Get Feedback:** Use AI to get advice on your work, helping you see what you're good at and where you can improve.
- **Find Resources:** Access AI-recommended materials that match how you like to learn.



Accountability

- **Be a Good Digital Citizen:** Respect privacy and follow the rules when using AI tools.
- **Think Big Picture:** Understand how using AI today might impact your future learning and career paths.

AI for Jordan Teachers



- Utilize professional development to understand AI's role in education, including its ethical implications
- Communicate how AI is being used in the classroom
- Use AI to inform lesson planning and classroom management



- Utilize professional development to understand AI's role in education, including its ethical implications
- Communicate how AI is being used in the classroom
- Use AI to inform lesson planning and classroom management
- Understand ethical and legal implications from uploading student or school data to an AI bot



- Utilize AI as a thought partner to brainstorm and/or refine educational practices
- Implement AI tools to create individualized learning experiences for all students
- Use AI to draft communication that meets professional standards



- Inform students and parents about classroom AI use, prioritizing privacy and data security
- Utilize AI as a thought partner for instruction, assessment, and planning.
- Keep the Human in the Loop: Don't allow AI to take over classroom instruction and grading

AI for Jordan Admin



Assess

- Regularly review AI initiatives for alignment with educational goals and ethical guidelines.
- Emphasize the human element and keep educators in the AI feedback loop.
- Share AI use cases and best practices to inspire others.



Aware

- Develop school-wide policies regarding AI usage, ensuring that ethical guidelines are in place and adhered to by all staff and students.
- Share the school's vision and strategy for AI integration with stakeholders, including parents, teachers, and the community.
- Communicate the ethical and practical ramifications of using AI for students, teachers, and community members.



Advocate

- Implement AI technologies to enhance education, offering resources and training.
- Encourage educators to collaborate and share AI best practices.
- Offer low-pressure opportunities for staff to experiment with AI, promoting curiosity and rigor.



Accountable

- Monitor AI for ethical compliance, addressing bias or misuse.
- Gather feedback to refine AI strategies and provide regular training.
- Inform staff about updates to district-approved digital tools.
- Model good AI data practices for teachers and students

AI for Jordan Parents



- Evaluate AI outputs for accuracy and relevance (e.g., deepfakes, hallucinations).
- Discuss AI's role and implications in education through open dialogue.
- Connect AI to sustainability, problem-solving, and future readiness goals.



- Understand the role of AI in education to foster informed discussions about its benefits and challenges. Be aware of what AI tools students have access to in school.
- Stay informed about the ethical considerations and potential biases of AI technologies (Myths and misconceptions)
- Encourage transparency regarding how AI is being used in schools and its impact on students' learning experiences.



- Use AI to enhance personalized learning and academic success.
- Promote family discussions on AI's role in improving efficiency.
- Partner with families to support education with AI, mentoring students using approved tools.



- Advocate for ethical AI use and student privacy.
- Support the human element in education alongside AI integration.
- Involve the community in creating balanced, accountable AI guidelines.

DO's



- **Preview AI-generated materials before sharing with students.** Make sure content is accurate, age-appropriate, and aligns with your lesson goals.
- **Use AI to save time on routine tasks.** Let AI help with drafting quizzes, worksheets, and lesson plans—so you can focus on teaching.
- **Encourage creativity and critical thinking.** Use AI as a tool to spark ideas, not just to give answers.
- **Model safe and responsible AI use.** Talk with students about digital citizenship and data privacy.
- **Adapt AI outputs for different learners.** Modify materials so they fit your student's needs, reading levels, and interests.
- **Check for bias and sensitive content.** Review outputs to ensure they're fair and inclusive.
- **Keep learning about AI.** Stay updated on best practices and new tools.

DON'Ts



- **Don't upload student identifiable information into non-supported AI tools.** Protect privacy by following state and district guidelines.
- **Don't rely on AI for final decisions or grades.** Always use your professional judgement for assessments and feedback.
- **Don't present AI outputs as perfect or infallible.** Remind students (and yourself) that AI can make mistakes.
- **Don't use AI to replace meaningful teacher-student interactions.** Technology should support, not substitute, real connections.
- **Don't ignore copyright or attribution.** Credit sources and be mindful of intellectual property.

Quick Reference Guides



Quick Reference For Educator Use of AI



Plan & Prep



Create & Customize



Evaluate & Advise

Increasing Level of Scrutiny Required

Use AI as a **Thought Partner** to brainstorm ideas, make outlines, and to assist in administrative tasks. Keep private information out.

- Professional learning
- Summarize and organize research
- Personal ideation & brainstorming
- Productivity enhancements

Use AI to generate lesson content, assessments, and communication drafts. **Review and refine outputs.**

- Draft lesson plans, activities & rubrics
- Create instructional content
- Draft professional communication
- Differentiation of instructional materials

Use AI for data analysis and assistance in student feedback. Exercise high scrutiny, **Keep the Human in the Loop.**

- AI-assisted feedback for students
- Develop personalized student guidance (draft not decision making)
- Use for reflection and differentiated learning



Which Tools?

Open choice of AI apps and extensions. Refer to Learn Platform for approved tools and submit new ones.



Which Tools?

District-sponsored AI tools (SchoolAI, Gemini, Notebook LM), and other district tools with AI features (Canva, Adobe, Nearpod, Canvas, etc.)



Quick Reference For Educator Use of AI

DO's



- **Preview AI-generated materials before sharing with students.** Make sure content is accurate, age-appropriate, and aligns with your lesson goals.
- **Use AI to save time on routine tasks.** Let AI help with drafting quizzes, worksheets, and lesson plans—so you can focus on teaching.
- **Encourage creativity and critical thinking.** Use AI as a tool to spark ideas, not just to give answers.
- **Model safe and responsible AI use.** Talk with students about digital citizenship and data privacy.
- **Adapt AI outputs for different learners.** Modify materials so they fit your student's needs, reading levels, and interests.
- **Check for bias and sensitive content.** Review outputs to ensure they're fair and inclusive.
- **Keep learning about AI.** Stay updated on best practices and new tools.

DON'Ts



- **Don't upload student identifiable information into non-supported AI tools.** Protect privacy by following state and district guidelines.
- **Don't rely on AI for final decisions or grades.** Always use your professional judgement for assessments and feedback.
- **Don't present AI outputs as perfect or infallible.** Remind students (and yourself) that AI can make mistakes.
- **Don't use AI to replace meaningful teacher-student interactions.** Technology should support, not substitute, real connections.
- **Don't ignore copyright or attribution.** Credit sources and be mindful of intellectual property.

Quick Reference For Student Use of AI

The Sports Car & the Dump Truck

Vision:

- Be Curious
- Be Intentional
- Be United

Artificial Intelligence (AI) and Human Intelligence are like different vehicles. Just as you wouldn't use a powerful **Sports Car** to haul piles of rocks across town, you wouldn't use a **Dump Truck** to travel quickly and efficiently across the country. Each form of intelligence is optimized for different tasks. The key to thriving in an AI world is knowing when it would be irresponsible to hand off a decision or task to AI—and when it would be irresponsible not to.

Human Intelligence (The Sports Car)



This is YOU. Your brain, your unique opinions, and your ability to create relationships, show empathy, and exercise discernment. **DO NOT** hand off these tasks to AI.

Sports Car Job (Do It Yourself)	Why Human Intelligence?
Forming Your Own Opinions (e.g., developing your stance for a civics essay or debate)	Forming your opinion should never be offloaded to machines. You need to develop your ability to weigh pros and cons and form opinions.
Developing Core Skills (e.g., writing a first draft, solving a math problem to show your work)	This improves your habits and understanding. If the goal is to learn the process, use traditional methods.
Ethical & Relational Tasks (e.g., building relationships, practicing empathy, making high stakes decisions)	These require accountability and judgement to be a Good Digital Citizen and understand how your actions impact your future.

Artificial Intelligence (The Dump Truck)



This is your powerful assistant—great at summarizing, recognizing patterns, and generating possibilities. Intentionally use AI for these tasks.

Dump Truck Job (Use AI as a Partner)	How AI Helps Your Learn Intentionally?
Quick Generation (e.g., brainstorming ideas, drafting outline, summarizing large research documents)	Forming your opinion should never be offloaded to machines. You need to develop your ability to weigh pros and cons and form opinions.
Personalized Learning & Feedback (e.g., getting advice on your work, practicing difficult concepts, finding resources)	Use it to see what you are good at and where you can improve, accessing materials that match how you like to learn.
Translation & Clarity (e.g., translating a source document to speed up research)	Use it to remove barriers and get quick, personalized learning support.

Student Cautions: Accountability and Awareness

When “Driving the Dump Truck” (using Artificial Intelligence), you must take accountability for its use.

- **Don't Cheat:** Never submit AI-generated work as your own original work. Understand the difference between when AI use is appropriate versus traditional methods.
- **Don't Share Private Data:** Do not upload any personal or sensitive information to non-district-approved AI tools.
- **Do Verify:** Always weigh the pros and cons of AI. The AI's output (like “hallucinations” or inaccuracies) is your responsibility.
- **Do Follow the Rules:** Be a good digital citizen; respect privacy and follow the rules when using AI tools.
- **Do Familiarize Yourself:** Learn about district-approved AI tools and their proper uses.

Adapted from article by Richard Culatta “[What a Dump Truck and Sports Car Can Teach Us About AI](#)”

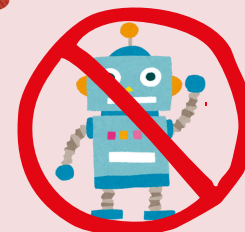
AI Stoplight: Using My Human Brain & AI Tools

Red: STOP! (Human Intelligence Only)



When? Learning a new skill for the first time or showing what you can do on your own.

Why? Need to build my own “mental muscles” and habits.

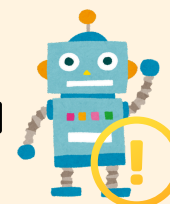


AI Tools are not allowed

Yellow: Caution! (AI with Teacher Help)

When? Need a “Thought Partner” to help get started or find more information.

Rule: Always ask your teacher before using AI for these tasks, and never copy-paste what it provides as your own work.

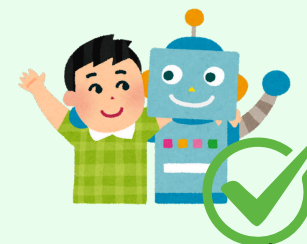


You can work with AI for certain tasks as allowed by your teacher

Green: GO! (AI Tools Allowed)

When? Your teacher says you are using specific AI tools to be creative, solve complex problems, or learn in a new way.

Rule: Stay on district-approved sites and act as a good digital citizen by being respectful and honest.



You can use approved AI Tools

The Golden Rule of the Road



Even when the light is Green, you are still the driver! You must always check the AI's work to make sure it is right, fair, and safe. You are accountable for everything you turn in, whether you used AI or not.

