

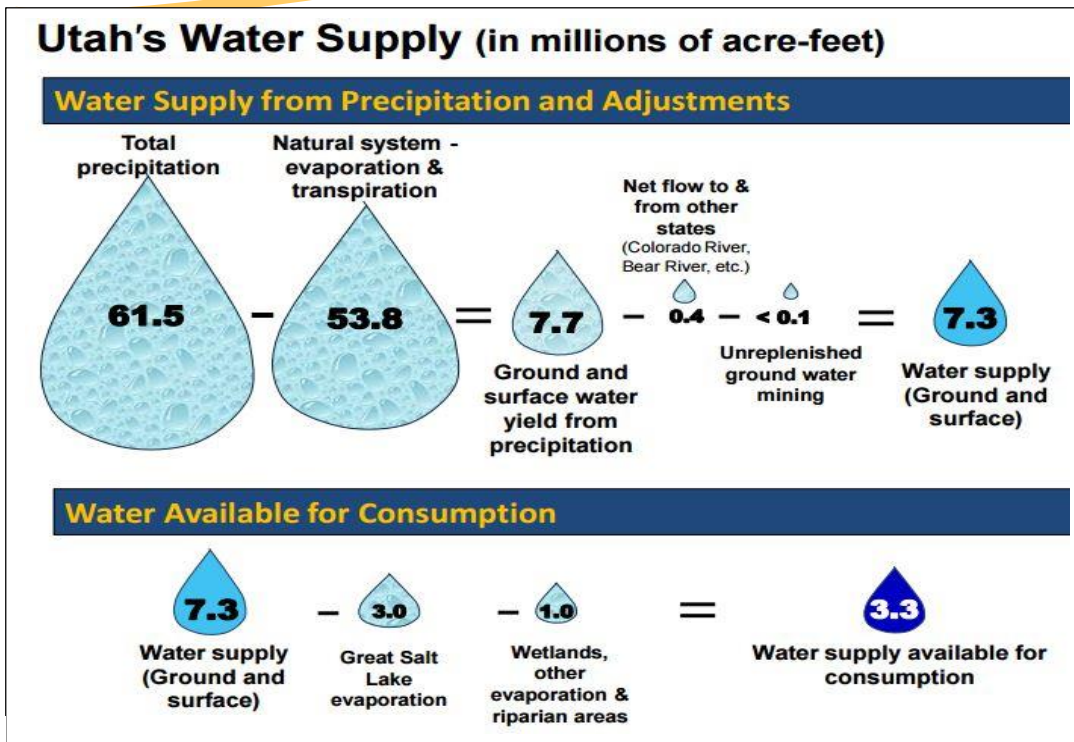
Energy Awareness

Where does our water come from?

March 2016
Volume 3

Inside this issue:

Where does our water go?	1
Water Facts	1
Quick Energy Checks	1
Energy Savers	2
Energy Education	2



Water Facts

- 70% of the earth is covered by **Water**
- Less than 1% of the earth's **Water** is drinkable
- An EnergyStar dishwasher uses 6 gallons of **Water** per wash cycle
- Use mulch around trees and bushes to reduce evaporation
- Our **Water** comes from the Provo River, Deer Creek Reservoir, Jordanelle Reservoir, and Mountain Streams along the east bench in Sandy
- Installing an aerator on your indoor faucets can save a significant amount of **Water** without affecting flow
- Most new toilets use 1.6 gallons per flush
- The average home can waste more than 10,000 gallons of **Water** per year, more than enough to fill a backyard swimming pool
- A faucet that leaks 60 drops per minute will waste 2,304 gallons of **Water** per year
- Install drip systems to water bushes, perennial flower gardens, and trees.

Quick Energy Checks:

- ✓ Does the faucet in your classroom drip? Call your Head Custodian
- ✓ No landscape watering between 10:00am and 6:00pm as mandated by Governor Herbert
- ✓ Utah is the 2nd driest state in the nation, but we use the most water per capita

Water conservation websites

www.epa.gov/watersense www.rebates.cuwcd.com www.home-water-works.org www.waterrights.utah.gov
slowtheflow.org www.weatherbug.com

Did you know?

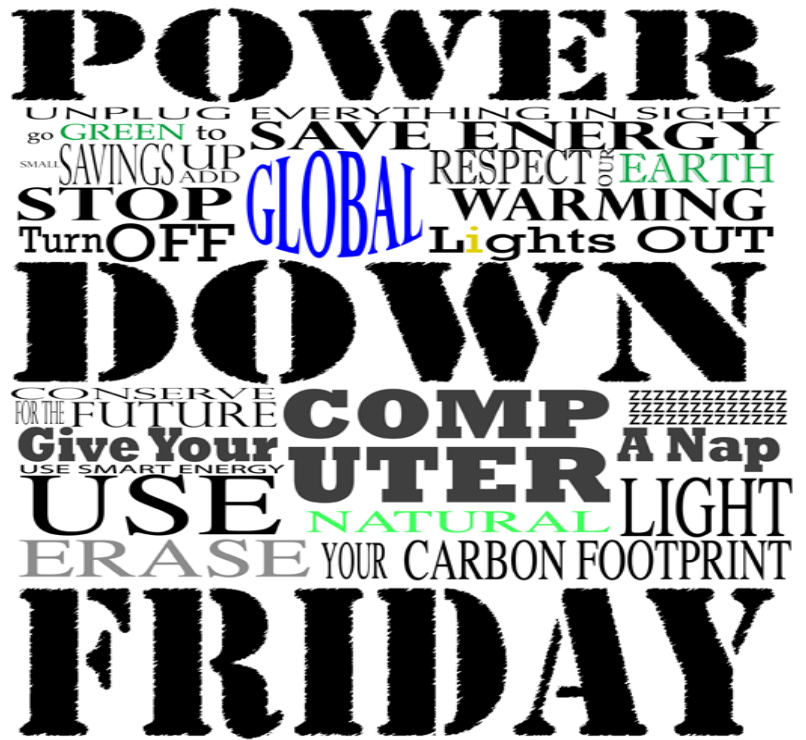
The energy saved by recycling a single aluminum can, or glass bottle, could operate a television for three hours or light a 100-watt light bulb for four hours.

Every time you open the refrigerator door, up to 30% of the cold air can escape. Your mom was right, close the door.

A typical desktop PC can save \$100 annually if shut down at night and on weekends. Turn off screen savers. Screen savers actually waste power by keeping your computer active and awake.

Currently only about 7% of all plastics generated is recycled compared to 62% of paper, 25% of glass and 35% of metals.

Electricity is measured in kilowatt-hours (kWh). One kWh of Energy is equal to 1000 watt hours and will power a 100 watt light bulb for 10 hours.



Energy Education



Elementary Science Fair Judging

Energy Services goal is to create a sustainable culture of Energy awareness. From classrooms to science fairs, and from custodial training to building upgrades, we should all be wise stewards of our resources. Over the past two years, over 115 Energy classes have been taught to Elementary and Secondary students.

We are all working to bring out the best potential in all of our students and help every employee to work more efficiently.

The biggest and most valuable Energy resource within the district are the students and employees. Energy is defined as the ability to do work, either kinetic or potential. Kinetic refers to things that are in motion and potential is stored Energy.



Energy savings 2014/15 school year



JATC Engineering class