

One Way

Una Vía



Social Distancing

Distanciamiento Social



One Way

Una Vía



Social Distancing

Distanciamiento Social



Keep Right

Manténgase a la derecha



Social Distancing

Distanciamiento Social



Keep Right

Manténgase a la derecha



Social Distancing

Distanciamiento Social



Wash Your Hands

Wet Hands



Apply Soap



Wash for 20 Seconds



Rinse Well



Dry Hands



Turn Off Tap w/ Towel



Lávese Las Manos

Manos Mojadas



Aplique Jabón



Lavar por 20 Segundos



Enjuague Bien



Manos Secas



Cierre El Grifo Con La Toalla



Prevent the Spread of COVID-19



Wash Your Hands to
Stop the Spread of Germs

JORDAN 
SCHOOL DISTRICT

COVID19.JORDANDISTRICT.ORG

Prevenir la Propagación de COVID-19



Lávate las manos para
Detener la propagación
de gérmenes

JORDAN 
SCHOOL DISTRICT

COVID19.JORDANDISTRICT.ORG

Prevent the Spread of COVID-19



Please use
hand sanitizer
before entering

JORDAN 
SCHOOL DISTRICT

COVID19.JORDANDISTRICT.ORG

Prevenir la Propagación de COVID-19



**Por Favor Use
Desinfectante de Manos
Antes de Entrar**

JORDAN 
SCHOOL DISTRICT

COVID19.JORDANDISTRICT.ORG

Prevent the Spread of COVID-19



Disinfect Your
Work Area Regularly

JORDAN 
SCHOOL DISTRICT

COVID19.JORDANDISTRICT.ORG

Prevenir la Propagación de COVID-19

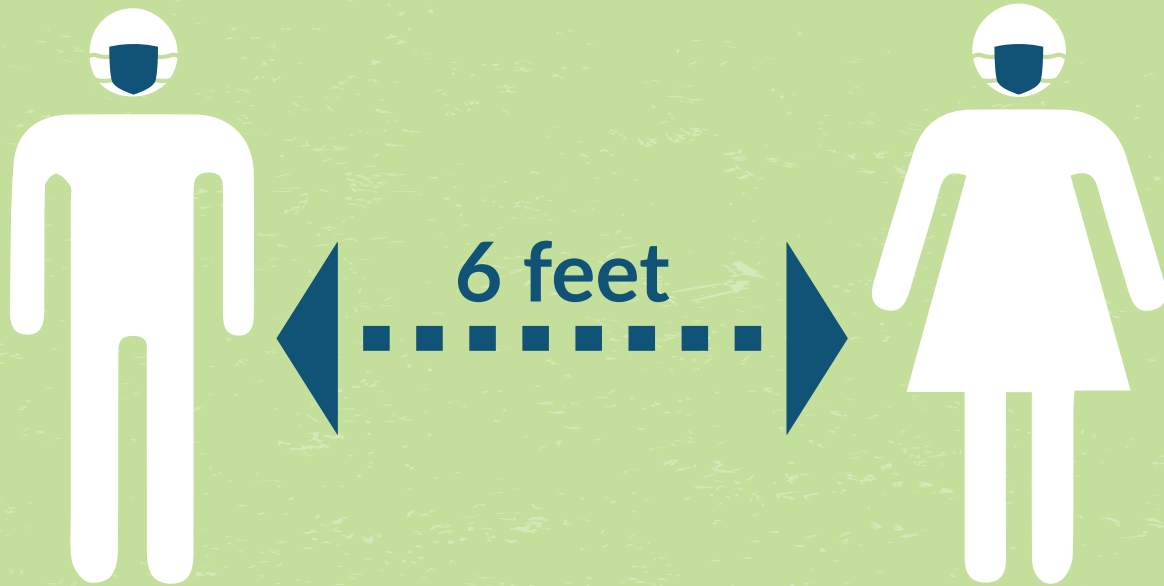


Desinfecte Su Área
de Trabajo Regularmente

JORDAN 
SCHOOL DISTRICT

COVID19.JORDANDISTRICT.ORG

Help Protect Yourself & Others from COVID-19



Practice Social Distancing



Wear a Face Covering

JORDAN 
SCHOOL DISTRICT

Ayude a Protegerse y Proteger a Otros del COVID-19



Practica el Distanciamiento Social



Use Una Cubierta Facial

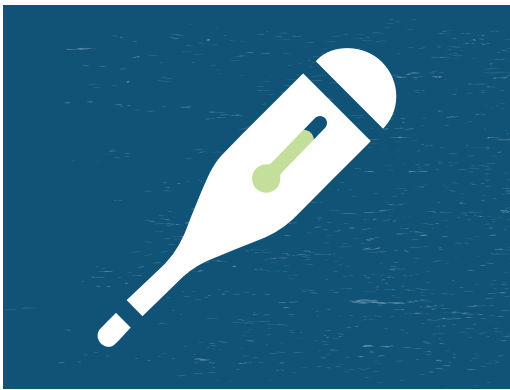
JORDAN 
SCHOOL DISTRICT

COVID19.JORDANDISTRICT.ORG



Please Don't Enter

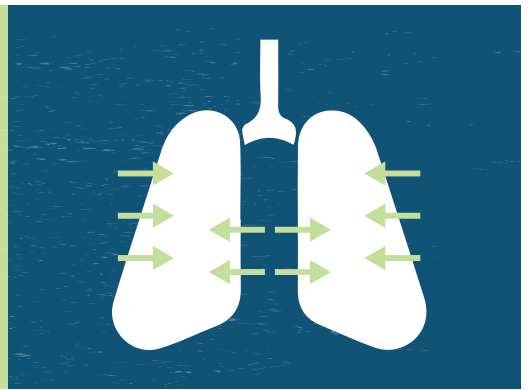
If you are feeling sick or
have the following symptoms



Fever



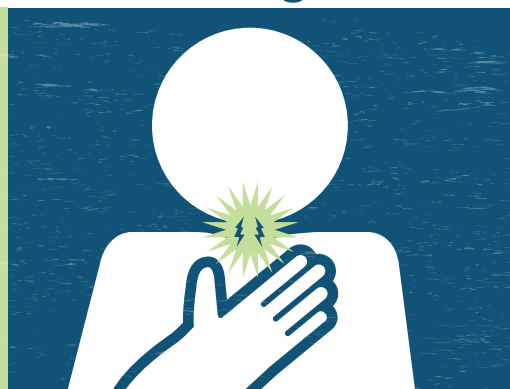
Cough



Shortness of Breath



Decrease in Sense
of Smell or Taste



Sore Throat



Muscle Aches & Pains

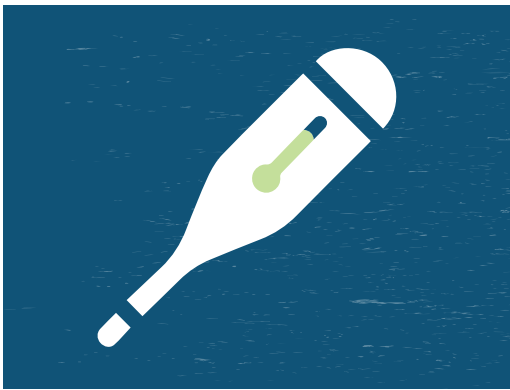
JORDAN
SCHOOL DISTRICT





Por Favor No Entre

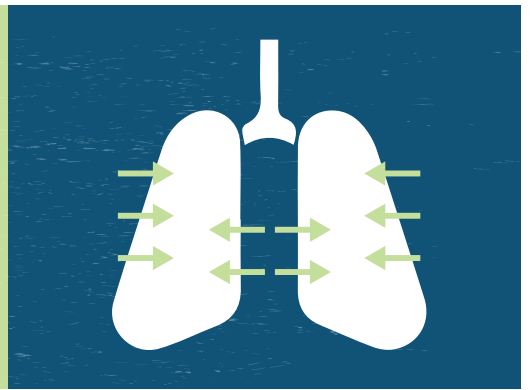
Si se siente enfermo o
tiene los siguientes síntomas



Fiebre



Tos



Falta de aliento



Pérdida del sentido
del olfato o del gusto



Dolor de garganta



Molestias y dolores
musculares

JORDAN
SCHOOL DISTRICT





Please Don't Enter

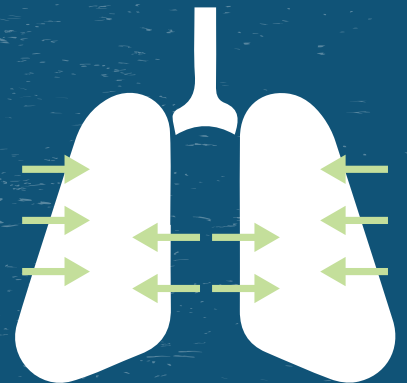
If you are feeling sick or
have the following symptoms



Fever



Cough



Shortness
of Breath

JORDAN
SCHOOL DISTRICT





Por Favor No Entre

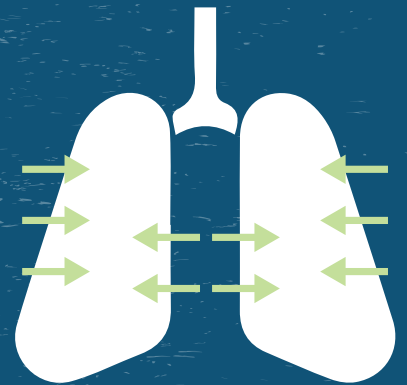
Si se siente enfermo o
tiene los siguientes síntomas



Fiebre



Tos



Falta
de aliento

JORDAN
SCHOOL DISTRICT

