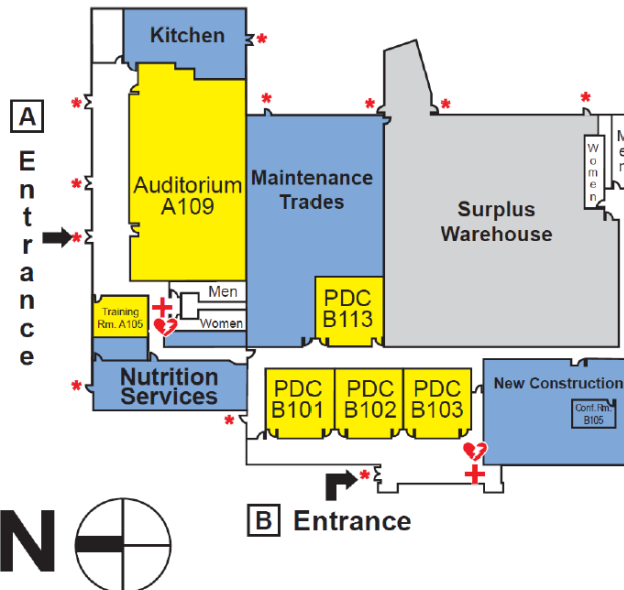


2024 Utah Skyward Conference

November 6, 2024

Jordan School District Auxiliary Services Building
 7905 South Redwood Road (1700 West), West Jordan, Utah 84088
Park at the North end of the building – Use Entrance A

	Auditorium A109	PDC B101	PDC B102	PDC B103	PDC B113
7:45 am	Check In				
8:00 am	Opening Remarks – Auditorium A109				
Session 1 8:20 am	<i>Data Mining – Beginning Makayla T</i>	<i>Admin Bootcamp Becky T</i>	<i>Tips & Tricks Trish W</i>	<i>Attendance Letters Erica H</i>	<i>Qmlativ Business Prep to move to Q Julie G</i>
Session 2 9:25 am	<i>Data Mining – Advanced Makayla T</i>	<i>Endorsements & how they apply to UT Becky T</i>	<i>Grade Analysis Trish W</i>	<i>Food Service Tips & Tricks Scott W</i>	<i>Qmlativ Business General Navigation Julie G</i>
Session 3 10:30 am	<i>Processing Lists Becky T</i>	<i>Discipline Erica</i>	<i>Communicating Grades/Progress to Parents Trish W</i>	<i>Food Service A-Z Scott W</i>	<i>Qmlativ Business Basic Reporting Julie G</i>
11:30 am	LUNCH – ON YOUR OWN				
Session 4 1:00 pm	<i>Data Mining – Beginning Erica H</i>	<i>All the different ways to build a schedule Part 1 Makayla T</i>	<i>Tips & Tricks Becky T</i>	----	<i>Qmlativ Business Payroll Processing Julie G</i>
Session 5 2:05 pm	<i>Data Mining – Advanced Erica H</i>	<i>All the different ways to build a schedule Part 2 Makayla T</i>	<i>NSOE Trish W</i>	----	----



Session Descriptions

Session 1 8:20 am

Data Mining Beginning	Skyward Data Mining allows users to create their own reports using different fields found inside of the Student Profile. This session will provide the basics for creating simple reports, understanding ranges, sorting and more.
Admin Bootcamp	This session will give Administrators a chance to delve into Office Reports, Message Center for Administrators, and Teacher Tracking through EA Plus.
Tips & Tricks	This session will cover little tips and tricks to get you around the Skyward System as efficiently as possible including favorites, widgets, multiple windows, screen filtering and preferences.
Attendance Letters	From setting them up to sending them out: see the steps for setting up your attendance letter criteria and running the processes to generate letters for those students who have reached that number of absences.
Qmlativ Business: Prep to move to Q	This session will cover the steps needed to clean up your database to prepare for your Qmlativ migration.

Session 2 9:25 am

Data Mining Advanced	This session will explore some of the more advanced features in Data Mining such as And/Or filters, labels, Word merges, export to Excel and more. You will be expected to already have a basic understanding of Data Mining coming into this session.
Endorsements & how they apply to Utah	New Utah State Requirement - This session will show you how to use our Endorsements area to track students who take courses in 7 th – 8 th grade that will earn high school credit but only if they have met middle school requirements first. We'll show you how to set up Endorsements so you know who has and has not met these middle school requirements so they can/cannot receive high school credit.
Grade Analysis	This session will be discussing options for Grade Analysis Reporting. There are several reports that can be run to analyze grades by student or teacher, along with eligibility.
Food Service Tips & Tricks	This session will cover various tips & tricks within the Food Service program that you may not be aware of.
Qmlativ Business: General Navigation	Come get a big picture overview of our Qmlativ Business product

Session 3 10:30 am

Processing Lists	Have you ever wanted to run a report or utility and have it include only a certain group of students? If so, come and learn how easy it is to create processing lists, change names within that list and use that list to run reports and utilities.
Discipline	This session will show you how to track student Discipline in Skyward and what is required for State Reporting.
Communicating Grades/Progress to Parents	This session will be a mix of Report Cards, Progress Report Letters, Progress Reports, Family Access Grading/Progress Report Emails and more.
Food Service A-Z	This session will cover everything from Food Service Applications, Reports, Utilities and Point of Sale for our Food Service module.
Qmlativ Business: Reporting	Come see all the different ways you can use Qmlativ for your Reporting needs.

Session 4 1:00 pm

Data Mining Beginning	Skyward Data Mining allows users to create their own reports using different fields found inside of the Student Profile. This session will provide the basics for creating simple reports, understanding ranges, sorting and more.
All the different ways to schedule Part 1	Learn the different ways to Future Schedule your students. Online Request Entry, Arena Scheduling, Mass Scheduling or use a combination!
Tips & Tricks	This session will cover little tips and tricks to get you around the Skyward System as efficiently as possible including favorites, widgets, multiple windows, screen filtering and preferences.
Qmlativ Business: Payroll Processing	This session will cover the Qmlativ Payroll process, focusing on the differences between SMS and Qmlativ

Session 5 2:05 pm

Data Mining Advanced	This session will explore some of the more advanced features in Data Mining such as And/Or filters, labels, Word merges, export to Excel and more. You will be expected to already have a basic understanding of Data Mining coming into this session.
All the different ways to schedule Part 2	Continuation of Part 1. Learn the different ways to Future Schedule your students. Online Request Entry, Arena Scheduling, Mass Scheduling or use a combination!
NSOE	This session will cover our New Student Online Enrollment module configuration, application process, processing an application and seeing where attachments show up in Skyward.