

2022 Utah Skyward Conference

November 16, 2022

**Alpine School District
575 N 100 E
American Fork, UT 84003**

Refreshments will be in Room 220 (Main Building)

	<i>Room 100 (Main Building)</i>	<i>Room 315 (PDC)</i>	<i>Room 316 (PDC)</i>
7:45 am	-----	Check-in	Check-in
8:00 am	-----	Opening Remarks	Opening Remarks
Session 1 8:20 am	<i>Tips & Tricks</i> <i>(Presenter: Trish)</i>	<i>Data Mining Beginning</i> <i>(Presenter: Makayla)</i>	<i>Graduation Requirements</i> <i>(Presenter: Becky)</i>
Session 2 9:25 am	<i>Family Access/Mobile App</i> <i>(Presenter: Trish)</i>	<i>Data Mining Advanced</i> <i>(Presenter: Makayla)</i>	<i>Admin Bootcamp</i> <i>(Presenter: Becky)</i>
Session 3 10:30 am	<i>Communication Tools</i> <i>(Presenter: Trish)</i>	<i>Top 10 Demographic Reports</i> <i>(Presenter: Makayla)</i>	<i>Current Scheduling</i> <i>(Presenter: Becky)</i>
11:30 am	LUNCH – ON YOUR OWN		
Session 4 1:00 pm	<i>Grade Analysis</i> <i>(Presenter: Trish)</i>	<i>Newbie Bootcamp</i> <i>(Presenter: Makayla)</i>	<i>Office Visits</i> <i>(Presenter: Becky)</i>
Session 5 2:05 pm	<i>Discipline</i> <i>(Presenter: Alpine SD)</i>	<i>Processing Lists</i> <i>(Presenter: Makayla)</i>	<i>Conference Scheduler</i> <i>(Presenter: Becky)</i>

No Registration Required

Session Descriptions

Session 1 8:15 am

Tips & Tricks	This session will cover little tips and tricks to get you around the Skyward System as efficiently as possible including favorites, widgets, multiple windows, screen filtering and preferences.
Data Mining Beginning	Skyward Data Mining allows users to create their own reports using different fields found inside of the Student Profile. This session will provide the basics for creating simple reports, understanding ranges, sorting and more.
Graduation Requirements	This session will cover the concepts and reports available to track student graduation.

Session 2 9:20 am

Family Access/Mobile App	Ever wonder what parents and students are seeing in Skyward? This session is an overview of the features available in Family and Student Access, where you'll also get a glimpse at the Skyward Mobile App.
Data Mining Advanced	This session will explore some of the more advanced features in Data Mining such as And/Or filters, labels, Word merges, export to Excel and more. You will be expected to already have a basic understanding of Data Mining coming into this session.
Admin Boot Camp	This session will give Administrators a chance to delve into Discipline, Office Reports, Message Center for Administrators, and Teacher Tracking through EA Plus.

Session 3 10:25 am

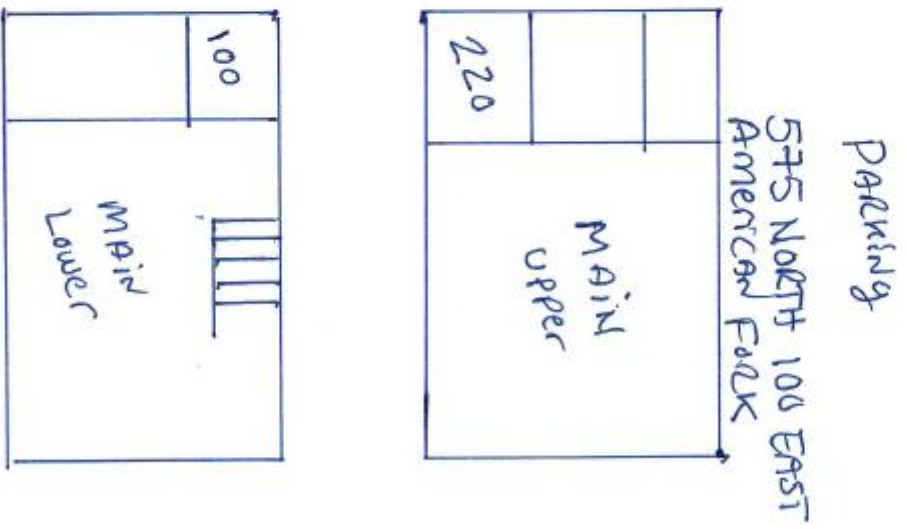
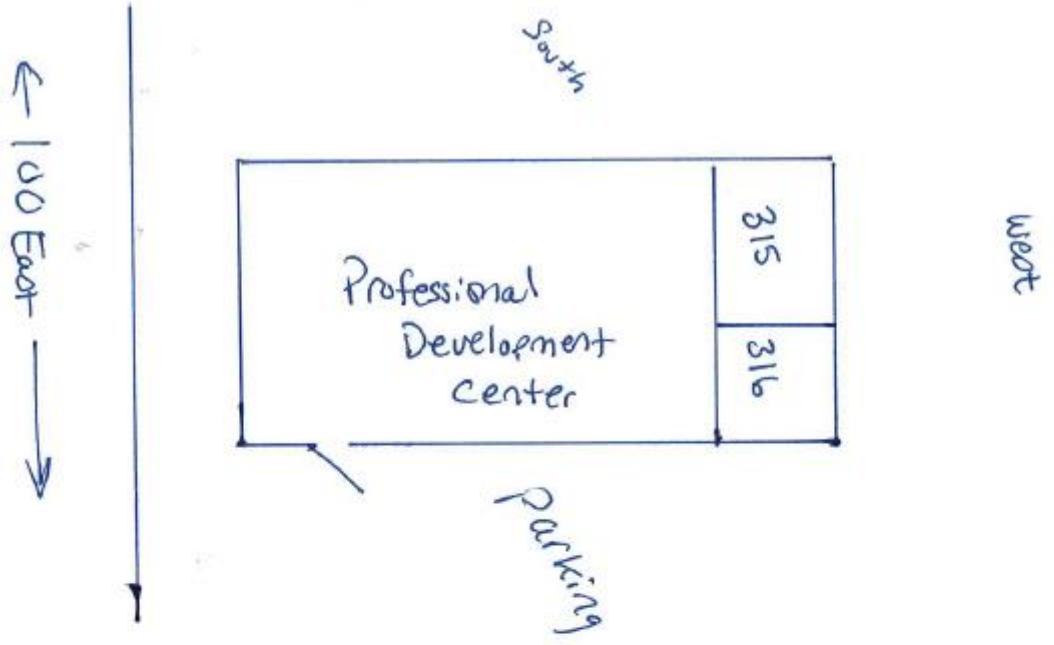
Communication Tools	Come see how to improve communications by using Message Center, Auto Emails, Family Access Auto Emails and more.
Top 10 Demographic Reports	Do you want to quickly gather useful student demographic information, but don't know where to begin? We will point you to the top ten student demographic reports in Skyward.
Current Scheduling	This session will mainly cover how to do adds, drops and adjustments on a student's schedule and how each option affects the Skyward Gradebook.

Session 4 1:00 pm

Grade Analysis	This session will be discussing options for Grade Analysis Reporting. There are several reports that can be run to analyze grades by student or teacher, along with eligibility.
Newbie Bootcamp	This session will focus on the new user to Student Management. We will cover things from New Student Entry, Family Changes, Report templates, Attendance Entry, CY Scheduling changes, Data Clean up, etc.
Office Visits	Have you ever thought it would be nice to have students use a kiosk to check themselves into the counseling center, nurse's office, attendance office or discipline office? Wait no longer!

Session 5 2:05 pm

Discipline	How do I track student discipline in Skyward and what is required for State Reporting? We have brought in the experts.
Processing Lists	Have you ever wanted to run a report or utility and have it include only a certain group of students? If so, come and learn how easy it is to create processing lists, change names within that list and use that list to run reports and utilities.
Conference Scheduler	Learn the three main components of Conference Scheduler: Student, Educator Access Plus, and Student/Family Access. Learn how to set up and configure Conference Scheduler, schedule conferences, use utilities, and run reports.



Restaurants Near Alpine School District Office

575 N 100 E

American Fork, UT 84062

Pizza Hut
76 N 100E
American Fork

Wendy's
368 E State St
American Fork

Mi Ranchito
396 E State St
American Fork

Sushi Garden Bistro
192 S 500 E
American Fork

Wallaby's Smokehouse
313 NW State St
American Fork

In N Out Burgers
601 W Main St
American Fork

JCW
580 E State Rd
American Fork

Mo'Bettahs
855 W State St
Pleasant Grove

Subway
537 E State St
American Fork

Jim's Family Diner
834 E State St
American Fork